

PFW系列高效反击式破碎机
PFW European Style Impact Crusher

上海世邦机器有限公司
SHANGHAI SHIBANG MACHINERY CO.,LTD.

中国上海浦东金桥南区建业路416号
No.416 Jianye Road, South Jinqiao Area, Pudong
New District, Shanghai, China

邮编 (Postcode): 201201

国际市场部 : International Trade Department

Tel: 0086-021-58386176

0086-021-58386189

Fax: 0086-021-58386211

Email: sbm@sbmchina.com

国内市场部 :

Tel: 400-696-1899 (24小时销售热线)

021-58386699

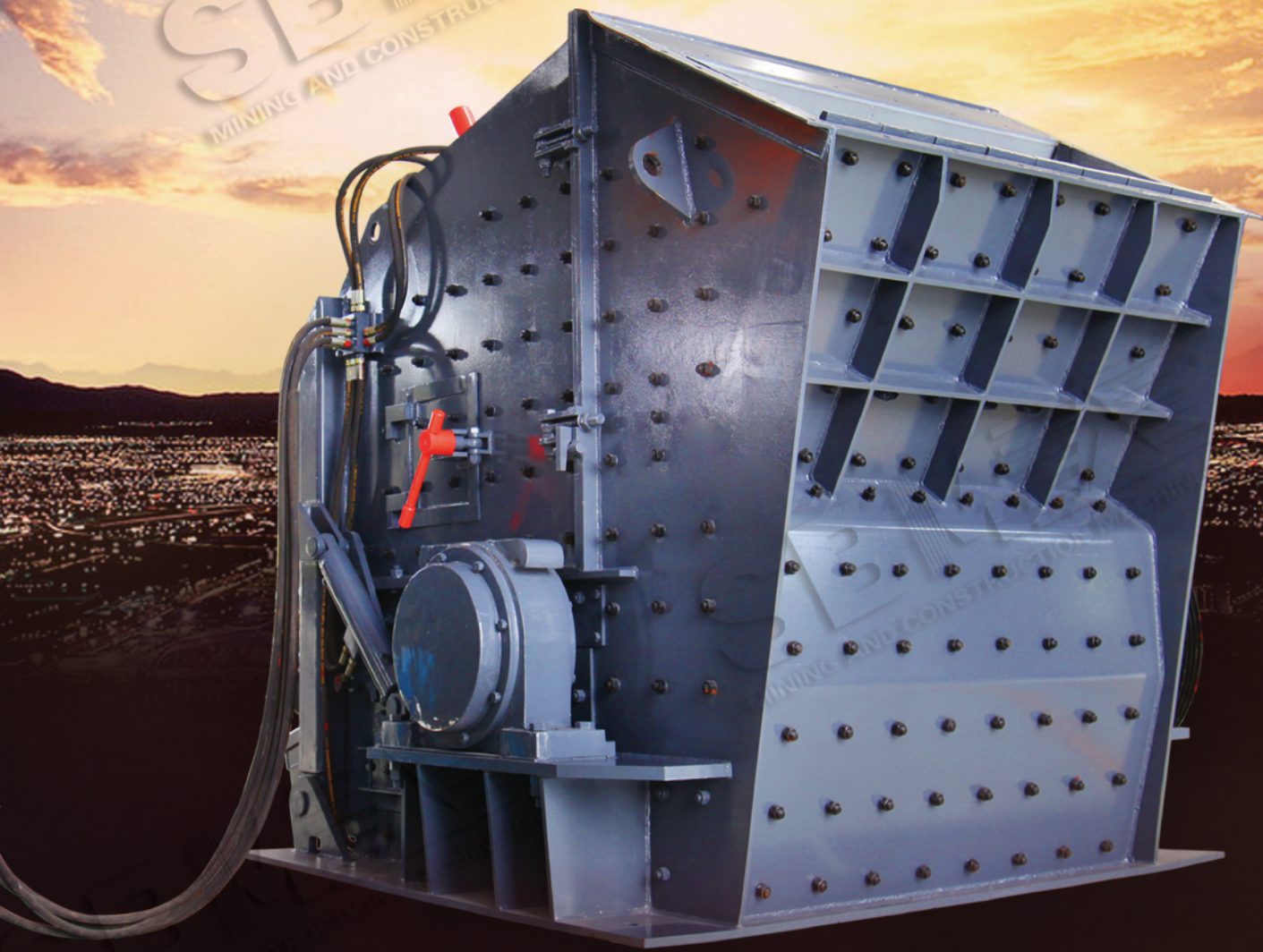
Fax: 021-58385681

品质与文明之光闪耀世界
The light of quality and civilization
shines the world

品质与文明永远闪耀世界!

The Light Of Quality And Civilization Shines The World!

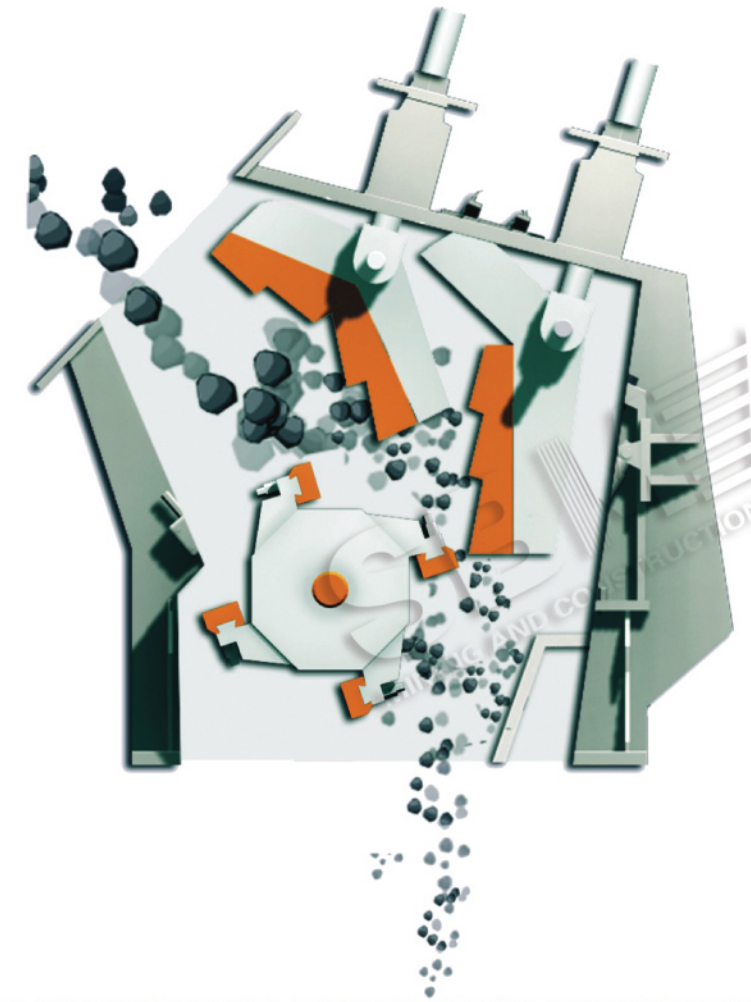
PFW 欧版反击式破碎机
European Style Impact Crusher



PFW系列欧版反击式破碎机
OPERATIONAL PRINCIPLE
工作原理

欧版反击式破碎机是一种利用冲击能来破碎物料的破碎机械。当物料进入板锤作用区时，受到板锤的高速冲击而破碎，并被抛向安装在转子上方的反击装置上再次破碎，然后又从反击衬板上弹回到板锤作用区重新破碎。此过程重复进行，直到物料被破碎至所需粒度，由机器下部排出为止。调整反击架与转子架之间的间隙可达到改变物料粒度和物料形状的目的。

It's a crushing machine to crush materials by impact energy. The material is crushed by high speed impact strength from the flat hammer upon entry into the flat hammer action area, and thrown to the impact plate on the top of the rotor to be crushed again, and then rebounded to the flat hammer action area from the impact plate for re-crushing. It's a repeating course till all materials are crushed to the expected granularity and discharged from the bottom of the machine. The granularity and shape of the material can be changed by gap regulation between the impact shelf and the rotor shelf.

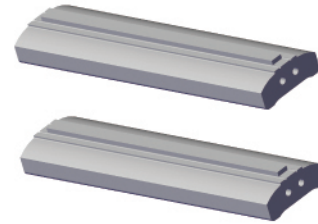


CHARACTERISTIC FEATURE 性能特点

先进的制造工艺、高端的制作材料 Advanced manufacture process and high-end fabrication material

设备的重要部件采用了先进的机加工工艺和热处理工艺，反击板由高耐磨材质铸造而成，且在反击面上装有衬板结构，极大地提高了反击板的耐磨性能。板锤由高铬材料与耐磨材质复合工艺浇注而成，并经过严格的热处理，具有良好的抗机械冲击、热冲击性能。

Key components of the equipment are made of advanced machining and hot treatment processes. Counterstrike board is casted by high wear resistant material and the impact face is provided with a lining structure, largely improving the wear resistance property of the impact plate. Board hammer is poured by the process integrating with highchrome material and wear-resistant material and processed by the rigid thermal treatment, having fine machine impact resistance and thermal impact resistance properties.

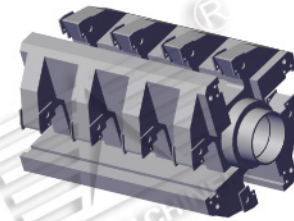


高耐磨板锤
High wear resistant flat hammer

重型化的转子设计、严密的检测方法。 Heavy rotor design and tight test method

欧版反击破采用结构坚固的重型化转子以获得更高的转动惯量和反击力，增强其破碎能力。并利用严密的检测方法对转子进行表面、近表面和内部缺陷进行检测，以保证其高质量，从而提高转子的使用性能。

The European Style impact crusher adopts a rigid heavy rotor to gain more rotary inertia and counterforce to increase the crushing capacity; and is tested by the tight test method on the defect on the surface, near surface and inner surface to ensure its high quality and improve the rotor performance.

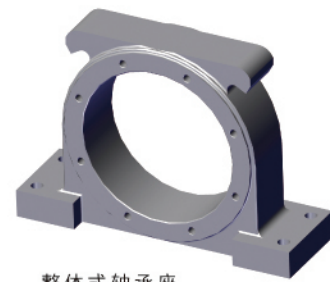


重型化装置
Heavy device

整体式的铸钢结构轴承座。 Overall type cast steel structure bearing base

整体铸钢轴承座能够保证与破碎机架完全配合，同时也大大增强了轴承座的径向强度，提高了它的抗负荷能力，而分体式轴承座则不具有该优点。

The overall cast steel bearing base is fully matched with the crusher, and largely increases the radial strength of the bearing base and improves anti load resistance capacity; while the split type bearing base is out of these advantages.



整体式轴承座
Overall type bearing base

可靠的楔块固定方式 Reliable wedge fixing mode

PFW反击式破碎机的板锤通过一组楔块固定在转子上，楔块从横向和纵向同时锁紧板锤，紧固扭矩更大，使板锤的安装和更换简单快捷，也消除了螺栓固定板锤时的磨损问题。

The flat hammer of PFW impact crusher is fixed on the rotor by a group of wedge blocks. The wedge block tightly locks the flat hammer from horizontal and vertical directions and needs more fastening torque to enable the flat hammer installed in a simple and convenient way and eliminate abrasions from the flat hammer fixed by bolts.

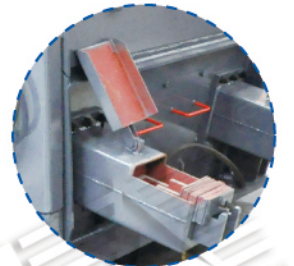


楔块固定方式
Wedge fixing mode

弹簧保险装置（已申请国家专利） Spring safety device (Application has submitted for state patent)

反击板后采用恒压力弹簧保险装置，当非破碎物进入破碎腔后，前后反击架后退，非破碎物从机内排出，恢复正常工作，消除了机器卡死的隐患。

Constant pressure spring safety device is adopted for counterstrike board. When non-crushing materials enters into the crushing chamber, front and rear impact shelves draws back and non-crushing materials are discharged to restore normal operation and eliminate the machine from blockage.



弹簧保险装置
Spring safety device

液压开顶装置、液压调节排料口。 Hydraulic jacking device and hydraulic regulated discharging port

PFW系列反击式破碎机两侧装有液压系统，既能打开机架又能作为排料口的调节装置，可迅速地完成锤头等易损件的更换和机器排料口的调节，节省了人力劳动和时间。

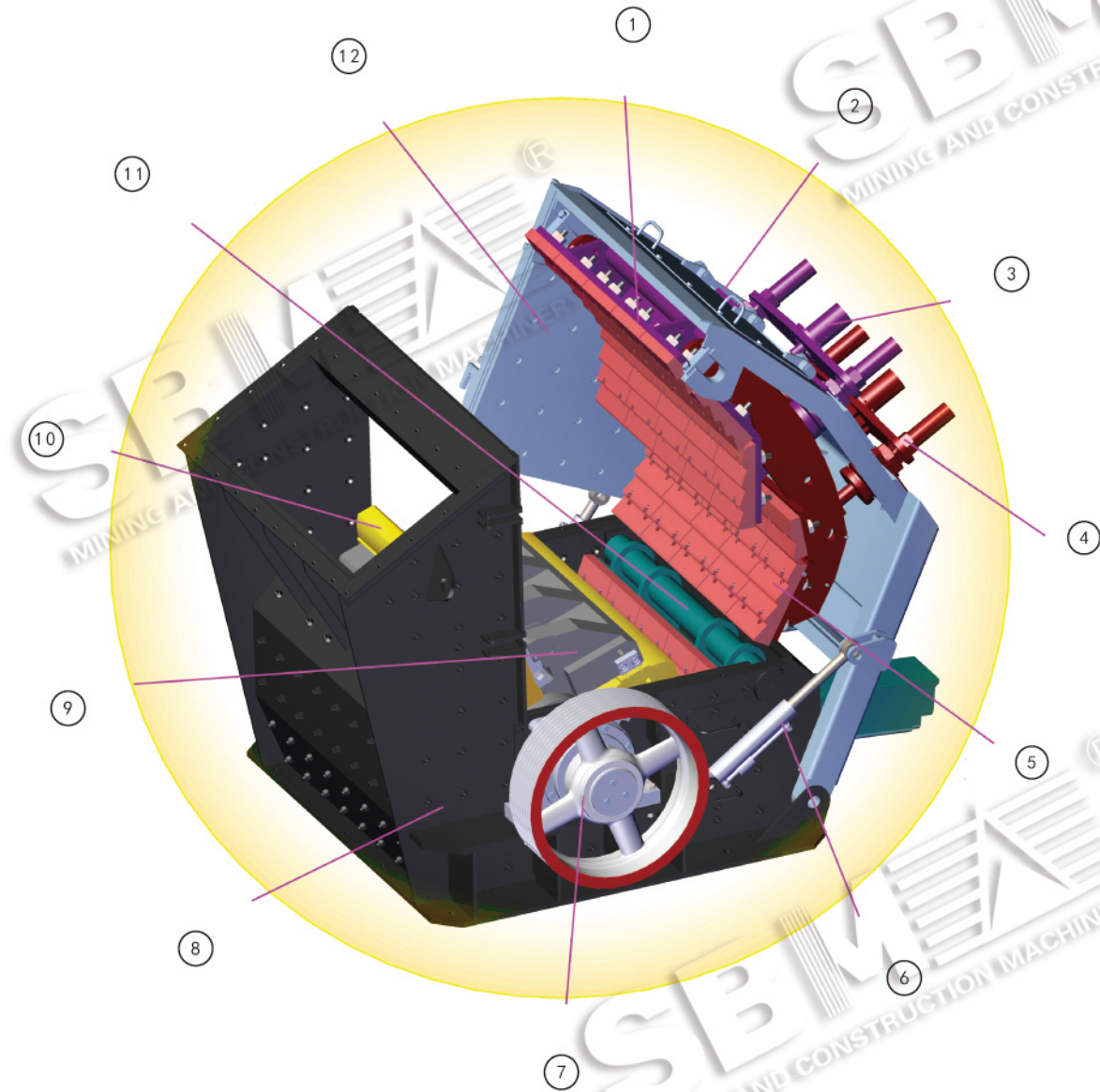
PFW series impact crusher is provided with the hydraulic system at both sides, which can open the stander as a regulation device for the discharge port, and also may rapidly replace vulnerable parts such as hammer head, and regulate the machine discharge port, saving labor and time.



液压调整装置
Hydraulic regulation device

PFW系列欧版反击式破碎机

MAIN STRUCTURE 主要结构



- | | | | |
|----------|-----------|--------------------------------------|--------------------------------------|
| 1 第一反击板部 | 7 皮带轮 | 1 第一反击板部 | 7 Belt Pulley |
| 2 检修门 | 8 下机架本体 | 2 Access door | 8 Lower rack nomenclon |
| 3 防护螺母 | 9 转子体 | 3 Protective nut | 9 Rotor block |
| 4 吊架螺栓 | 10 板锤 | 4 Hanger frame bolt | 10 Flat hammer |
| 5 第二反击板部 | 11 第三反击板部 | 5 Second counterstrike board section | 11 Third counterstrike board section |
| 6 启闭装置 | 12 侧衬板 | 6 Opening and closing device | 12 Side plate |

PFW系列欧版反击式破碎机

MAIN TECHNICAL PARAMETERS 主要技术参数



型号 Type	规格 Specification	进料口尺寸 Feed port size (mm)	最大进料粒度 Maximum feed granularity (mm)	生产能力 Productivity (t/h)	装机功率 Installed capacity (kw)	外形尺寸 External dimensions (mm)
PFW1210II	Φ1150X960	1100X1030	400	90-160	90-110	2400X1870X2550
PFW1214II	Φ1150X1400	1100X1430	500	130-200	132-160	2400X2310X2550
PFW1315II	Φ1300X1500	1200X1530	600	180-320	160-200	2700X2570X2800
PFW1318II	Φ1300X1800	1200X1830	700	240-400	200-250	2700X2870X2800
PFW1415II	Φ1400X1500	1450X1530	800	260-450	200-250	3000X4110X3070

two-chamber 二腔参数

型号 Type	规格 Specification	进料口尺寸 Feed port size (mm)	最大进料粒度 Maximum feed granularity (mm)	生产能力 Productivity (t/h)	装机功率 Installed capacity (kw)	外形尺寸 External dimensions (mm)
PFW1210III	Φ1150X960	570X990	250	70-120	90-110	2550X1870X2100
PFW1214III	Φ1150X1400	570X1430	250	90-170	132-160	2550X2310X2100
PFW1315III	Φ1300X1500	625X1530	300	180-270	160-200	2960X2570X2380
PFW1318III	Φ1300X1800	625X1830	300	220-300	200-250	2960X2870X2380
PFW1415III	Φ1400X1500	800X1530	350	280-350	200-250	3120X2650X2660

three-chamber 三腔参数